



How to Ensure Reliable Deck Waterproofing

When investing in a deck addition or upgrade, one of the most difficult decisions is selecting a contractor that you can be confident will do competent work. It's a big investment, so you want to be sure the job is done right the first time. Talk to your contractor openly about your project, ask to see some of their jobs, and gather references.

There are Good, Better and Best methods of achieving the desired result for your project. The methods your contractor chooses can be influenced by building code requirements, your budget restrictions, or your insistence (it is your project, after all). You can be confident that your professional Duradek contractor will always recommend the best methods to ensure reliable waterproof protection and that you receive the best results for your deck.

Reliable Details by Duradek

Unreliable Details

Deck Prep



← Recommended

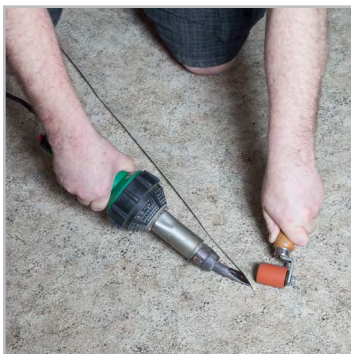
A properly prepared substrate must be a smooth, flat surface with consideration to moisture content, fill, gaps, and other details. See our [Substrate Recommendations](#).

Not Recommended →

Inadequate substrate preparation can result in uneven finished surfaces like ridges at the plywood seam that telegraph through the vinyl, bumps, bubbles, and more.



Seaming



← Recommended

Duradek waterproofing is a 3-weld system. We recommend a 3/4" seam overlap, back welded, then a main weld, and complete the seam with a cap weld.

Not Recommended →

Using seam tape, seam sealer, not enough seam overlap, or other poor securement techniques are not recommended, and can lead to seams gapping and splitting, destroying the system's waterproofing integrity.



Waterproofing a Door Sill

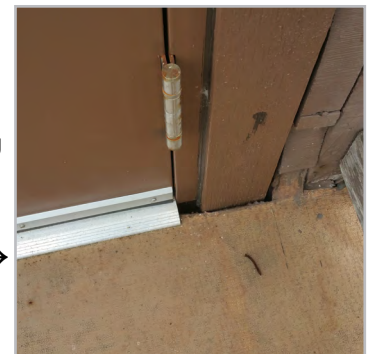


← Recommended

Duradek recommends removing the door and running vinyl into the door sill to create a watertight door flashing ensuring complete waterproof protection. See Detail Drawings [IS-03](#), [IS-04](#), and [IS-09](#).

Not Recommended →

Cutting vinyl around the door sill is not recommended and cannot be relied on to be watertight.



Reliable Details by Duradek

Unreliable Details

Inside Corners



← Recommended

Duradek recommends folding into a dog ear and fusing vinyl at inside corners without use of relief cuts. Must extend up all at least 6”.

Not Recommended →

Relief cuts are not recommended as they are an unnecessary risk to waterproofing integrity. Also leaves a pin hole at the corner.



Outside Corners



← Recommended

Duradek recommends using a watertight welded triangle patch on outside corners. Must extend up all at least 6”. *Left image shows two colors for demonstration only.*

Not Recommended →

Simply wrapping corners with vinyl is not recommended and cannot be relied on to be watertight as it leaves a pin hole at the corner.



Post Boot



← Recommended

Duradek recommends wrapping the vinyl up the post a minimum 6”, then overlapping a vapor barrier by minimum 2”, and finish with cladding with a minimum 2” clearance from deck surface (L-trim optional). See [Detail Drawing P-01](#).

Not Recommended →

Failure to extend the membrane up the post and simply caulking the edge of the vinyl to the base of post is not recommended.



Drip & PVC Clip

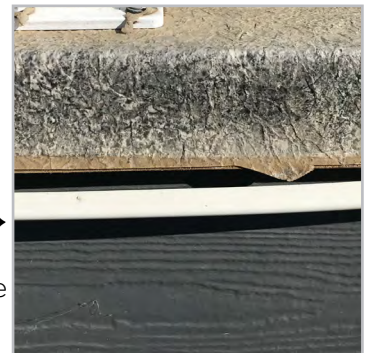


← Recommended

Duradek recommends leaving 3/4” of vinyl to fully wrap the flashing drip edge before installing the Clip. See [Detail Drawing OS-01](#).

Not Recommended →

Cutting the vinyl flush with the bottom of the flashing, or cutting ‘tabs’ can lead to vinyl receding beyond where the clip covers due to shrinkage.



Reliable Details by Duradek

Unreliable Details



L-Trim

← Recommended

Duradek recommends wrapping the edge of deck with membrane and installing L-Trim over top with butyl tape and fasteners to secure vinyl. See [Detail Drawing OS-02](#).

Not Recommended →

Leaving vinyl glued down with no mechanical fastening is not recommended.



PVC Coated Drip Flashing

← Recommended

Duradek recommends welding vinyl to PVC coated flashing. Flashing joints are to be covered with PVC Tape. See [Detail Drawing OS-03](#).

Not Recommended →

Do not allow contact adhesive or floor leveler on the last 3/4" surface of the PVC coated flashing where you will be welding. Cutting vinyl uneven with drip edge and leaving unsecured is not recommended.



Duradek Applicators Do it Right the First Time by:

- Ensuring adequate deck slope
- Ensuring correct plywood for the substrate
- Using only compatible fillers, adhesives and accessories
- Removal of pre-existing doors (where possible)
- Removal of cladding or stucco (where possible)
- Advising of compatible building papers and products
- Proper installation of drains and scuppers
- Waterproofing posts and columns like walls

Remember, the most important detail in the specialty trade of vinyl deck waterproofing is the skill of the [decking contractor](#). Duradek applicators are trained in waterproofing details, deck design, and building code requirements to ensure the job is done right the first time. **Discover the Duradek Difference.**

